

NEED SPACE? LET US QUOTE OUR SPEED SPACE PRE-BUILT BUILDING SYSTEM
DELIVERED TO YOUR FACILITY
READY TO USE WITH FACTORY FULL ACCEPTANCE GUARANTEE
INQUIRE AND ORDER FROM
DICK JONES SALES, INC.
258 Baltimore Street
PO Box 141
Hanover, PA 17331
Phone 800-441-9955
Fax 800-253-4036
Email dickjones@dickjonessales.com

READY TO WORK STRUCTURES · DIRECT TO YOU · **FAST**



The Building Experts

SPEED 
 **SPACE**®
Div. Commercial Structures Corp.

A few of our satisfied customers

Allegheny Ludlum	Macy's
Arcelor Mittal	Marathon Oil
Babcock & Wilcox	Medallion Foods
Bechtol Jacobs	National Weather Service
Best Buy Warehouse	New York Container Terminal
BMW Manufacturing	NIPSCO
BP Oil	Nissan
Brunswick Corp.	Norfolk Naval Shipyard
Carmeuse Lime	Notre Dame
Caterpillar Logistics	Nucor Steel
Charter Steel	NYC Transit
Chevron	Ormet Aluminum Corp.
Chrysler Corp.	Owens Corning Fiberglass
Conoco Phillips	Pacific Ethanol
Consumers Energy	Pep Boys
Con Edison	Prairie Meadows
Crayola	Pro Petroleum
Cracker Barrel	Proctor & Gamble
Daybrite Lighting	Ralston Purina
Dow Chemical	S.C. Johnson
Eastman Chemical	Sappi Fine Paper
Electrolux	Shamrock Foods
First Energy	Siemens Energy
General Foods	Subaru of Indiana
General Mills	Sunoco
Georgia Pacific	Tenneco Automotive
Goodyear Tire	The Trane Company
Graycor	The Walt Disney Co.
H&M Company	American Standard
Harley Davidson	Tyson Foods
Hartman & Hartman	Union Pacific Railroad
Hillshire Brands	United Farmers Co-op
Home Depot	US Steel
Johns Mansville	Walmart
Kaapa Ethanol	Westinghouse Electric
Kenworth Truck	
Kinder Morgan	
Kraft Foods	
Lockheed Martin	

Table of Contents

Advantages	4 - 5
In-Plant	6 - 7
Two-Story	8 - 9
Guard & Security	10 - 11
Scale Houses	12 - 13
Restroom, Shower, Locker & Break Rooms	14 - 15
MCC Blast-Resistant, Bulletproof	16 - 17
Special Exteriors	18
Interior & Exterior Colors	19
Construction Features	20
Standard Specifications	21
Standard & Modular Floor Plans	22 - 23

what our customers are saying

SPEED SPACE arrives completely assembled, pre-wired, pre-plumbed, and ready for use. Simply "plug" them in and you're ready to work. *SPEED SPACE* also eliminates time-consuming safety training sessions while limiting on-site personnel, thus reducing traffic and possible safety breaches.





advantages

We are known by our name and what we do best:
SPEED SPACE – unlike any other.

Thanks to our unlimited flexibility, we can design buildings that fit into your space, or you can choose from our exceptional pre-built ready-to-work modules.

SPEED

We deliver your *SPEED SPACE* offices three to four weeks from time of order. Upon arrival *SPEED SPACE* buildings are simply off-loaded with either a forklift or crane and put in place. Our prewired service entrance makes the electrical “hook-up” fast and simple. There are no short shipments, lost or damaged cartons, and no expensive on-site assembly issues. We deliver anywhere in the country and take full responsibility for on time, damage-free delivery.

SPACE

SPEED SPACE takes care of your space - either by addition or subtraction. We offer the most durable, flexible, sound-resistant and cost-effective office system on the market. Our product proves it.

Need more rooms? We can add more sections. Each section is prewired, has its own floor, roof system and built-in metal weather shields. Ready-to-work structures built for you, delivered direct to you and installed for you – YOUR SPACE.

you need it
we can build it

our customers solutions

- In-Plant Offices
- Guard Houses
- Restroom/Break Rooms
- Scale Houses
- Pump Houses
- Shower/Locker Rooms
- Dispatch Buildings
- Explosion-Resistant Buildings
- MCC Buildings
- Foreman's Office
- Non-Combustible Buildings
- First Aid Stations
- Equipment Enclosures
- Tool Bins
- Warming Stations
- Quality Control Booths
- Observation Stations
- Paint Booths

...And the list continues according to your needs

FAST

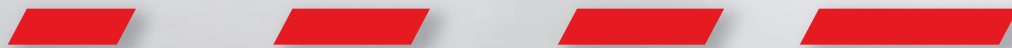


Today's changing workplaces demand flexibility. All *SPEED SPACE* buildings offer flexibility and can be used outdoors or indoors. Our modules can be joined for multi-room options or stacked for a two-story building. Because we deliver them in single or individual sections, you don't have to worry about disassembly and reassembly, lost parts, or lost time.



STANDARD FEATURES

- Complete Floor and Roof System
- Diffused Lighting
- Interior Receptacles
- Heavy-duty Vinyl Wall-covering
- 1/8" Industrial Floor Tile



tages

READY TO WORK STRUCTURES • DIRECT TO YOU • **FAST**



COST

We offer standard costs on offices at production line savings. You won't have assembly cost, weather delays, or bidding surprises with *SPEED SPACE*. *SPEED SPACE* buildings may be depreciated as equipment saving you expense budget money for other projects.

DURABILITY

These modular structures can withstand years of industrial abuse. With a 6" steel tube frame, floor joists 12" O.C., industrial flooring, 29 gauge steel siding, and a 4 mil. vinyl over gypsum interior walls, our offices and buildings are the toughest on the market. For long life, low maintenance, and easy repair, there is no substitute for *SPEED SPACE* quality. We are a design-build company capable of building to your specifications.

ENVIRONMENTAL ENGINEERING

Our engineers can solve any space problem whether environmental, technical or functional. You can expect maximum performance from *SPEED SPACE* no matter what the environment. Exceptional moisture and static electricity control capabilities are standard. These buildings have full insulation on all six sides, thermal windows, high light levels, and professional interior décor. Blast-resistant/bullet-resistant/explosion-resistant applications are also available upon request.

FLEXIBILITY

Today's workplaces need flexibility, and that's what you get with *SPEED SPACE*. We work with you to arrange our modules in the combination you need and add the capabilities required by your work space.

In-Plant Buildings



In-Plant

We design, fabricate, and install a wide range of in-plant buildings, including single or multi-story stackable buildings for quality control, archive storage, security, and restroom facilities. Our in-plant offices can be easily relocated to suit your needs. *SPEED SPACE* modules are fully assembled, wired, and plumbed, ideal for indoor or outdoor use. Fluorescent lighting, flame retardant materials, plus built-in weather shields keep equipment safe and employees comfortable.

Options include:

professional interior decors, custom electrical wiring, and washroom facilities.

SPEED **SPACE**® Div. Commercial Structures Corp.

SPEED SPACE buildings eliminate lost production, and unnecessary foot traffic throughout your facility. By arriving assembled and ready for use, the above mentioned concerns are significantly reduced.



Two-Story Buildings



These multi-level offices save your company time, money, and production floor space. Installed in minutes, no superstructure or mezzanine is required, but they can be installed separately as needed. There is excellent sound control between floors. Many companies buy the lower floor first and add the second floor later: that's *SPEED SPACE* flexibility.

Multi-level Offices

SPEED **SPACE**® Div. Commercial Structures Corp.



U.S. Naval
Photograph
Unclassified



Guard & Security B

All guard and security offices are constructed to be used outdoors. With the optional roof overhang, exterior lights and guard counter added to *SPEED SPACE's* standard features – thermal windows, heavy insulation, raised floor and steel frame – you'll have an attractive, comfortable security building that will last.

On arrival, utilities are hooked up and you are ready for work. If your plans change, *SPEED SPACE* security buildings can move with you, across town or across the country.

Safe, Secure buildings that Last



uildings

SPEED 
 **SPACE**®
Div. Commercial Structures Corp.



Scale Houses



Ready-to-Use Scale Houses

All of *SPEED SPACE*'s Scale Houses are custom-designed and built to meet your specific requirements. Your building will arrive ready to work. We will provide any and all electronic portals and place them exactly where you need them for an efficient and accessible scale and/or gate connection. We build Scale Houses in a variety of sizes from 60 square feet to 2,000 square feet. Let us design and build your next Scale House!



Our Scale Houses
Handle Any Load



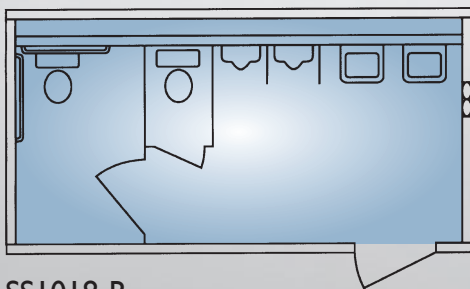
Restroom, Shower, Locker,



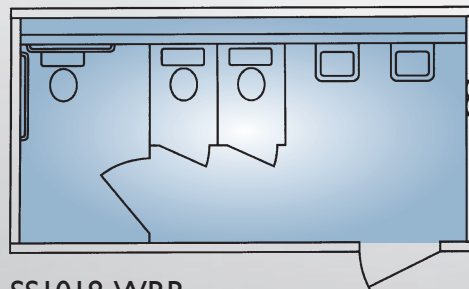
Restroom, Shower, Locker Rooms

SPEED SPACE builds aesthetically-appealing clean rooms, wash rooms, shower, and locker rooms, without making disruptive changes to your existing facilities. Plumbing facilities can be constructed to meet a variety of applications and accommodate any number of people. Delivered pre-wired and with pre-installed plumbing, these facilities are built with user-friendly features: handicap-accessibility options, showers, urinals, privacy partitions, plus lockers and benches. Our locker rooms, washrooms, and shower facilities also feature custom locker units, vapor-proof lighting, and commercial-grade flooring.

Standard or Custom Designed



SS1018-R
Handicap-Accessible Restroom



SS1018-WRR
Handicap-Accessible Restroom



& Break Rooms



Break Rooms



MCC Blast-Resistant, Bulle



Hazardous Locations

SPEED SPACE manufactures hazardous location structures for all your high security and safety needs: From non-combustible and explosion-resistant to bullet and blast protection. Our bullet-resistant structures are UL-approved and listed levels I-8. Our blast-resistant structures are available from I-8 psi, manufactured with FSP tested and V50 rated materials, and they meet "ballistic limits" under MIL-STD-622F and MIL-P-46593A military standards. Explosion-resistant structures are available in Class I, II, III, Division I & 2, Groups A, B, C, D, E, F, and G.

Custom buildings fit a variety of applications from petroleum field stations to specialized control booths. Available in temporary or permanent configurations and either single or multi-story, these buildings can be crane-liftable and/or forkliftable. *SPEED SPACE* prefabricated buildings can be set up in one day and offer cost savings. Our custom modular buildings give you the flexibility to choose the specifications best suited for your application with interior and exterior options.





Pump Houses

Our No-Floor Enclosures are the perfect solution to protect new or existing equipment. We deliver your enclosure outfitted to your specifications, we are capable of using a crane to set it over existing equipment, and connect power to the service panel. *SPEED SPACE* can provide everything you may need whether it is Power Transformers, High Voltage Receptacles or Cable Trays. Galvanized roof panels protect from moisture and rust. Wall panels are built with 26 or 29 gauge Ribbed Steel Panels for the most demanding applications. We use a variety of materials to meet your specifications.



Special Exteri



SPEED SPACE buildings can be built with any type of exterior to blend with any surrounding. Ask about our optional exterior siding and roof designs.



A Sampling of Available Exterior Finishes...

- Stucco with raised steel roof
- Steel exterior with sloped roof
- Fiberglass exterior with radius windows
- Brick exterior with shingled roof
- Brick and steel exterior with steel mansard

Trim color may be different than siding.
Color may vary slightly from samples.
Optional colors available.



ors



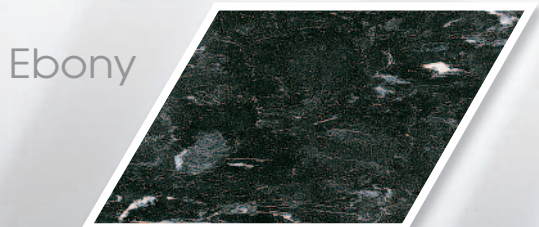
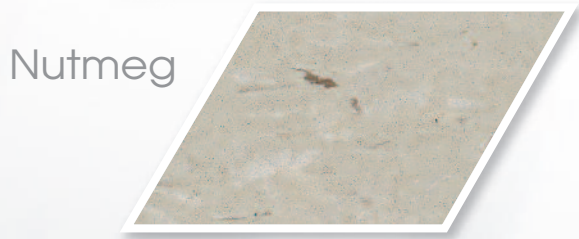
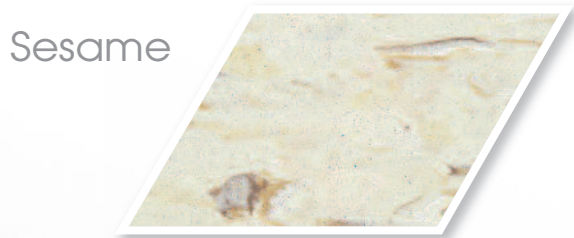
Standard Exterior Colors



Standard Interior Wall Coverings



Standard Interior Floor Coverings



Built To

Heavy Industrial Standards For Years Of Use

SPEED SPACE can stand years of industrial abuse. With 6" steel tube frame, floor joists 12" O.C., industrial flooring, 29 gauge steel siding, and a 4 mil. vinyl over gypsum interior walls, our offices and buildings are the toughest on the market. For long life, low maintenance, and easy repair, our quality has no substitute.



RAIN AND MOISTURE

Place our buildings inside or outside; they're designed for both. Enjoy excellent humidity control, thanks to the roof with 45 mil E.P.D.M., rubber roof covering, under-floor sheathing, double-insulated glass windows, vapor barrier, and moisture-proof sheathing.



WIND, COLD AND HEAT

Steel siding, structural thermal sheathing, full 3 1/2" insulation, and thermal windows guarantee comfortable temperatures even in the most severe weather.



FIRE

Steel siding, roof and underfloor sheathing, as well

as gypsum interior, give *SPEED SPACE* a class "A" flame spread rating on all surfaces. Sprinkler systems and totally non-combustible units are available.



NOISE

Structural sheathing, gypsum interior

and thermal windows create a decibel drop in the 25-30 decibel range, standard with windows and doors. Raised floor also reduces sound transmission. For extreme conditions, optional sound control is available (triple-glazed windows, sound board, carpeting, etc.)



DAMAGE

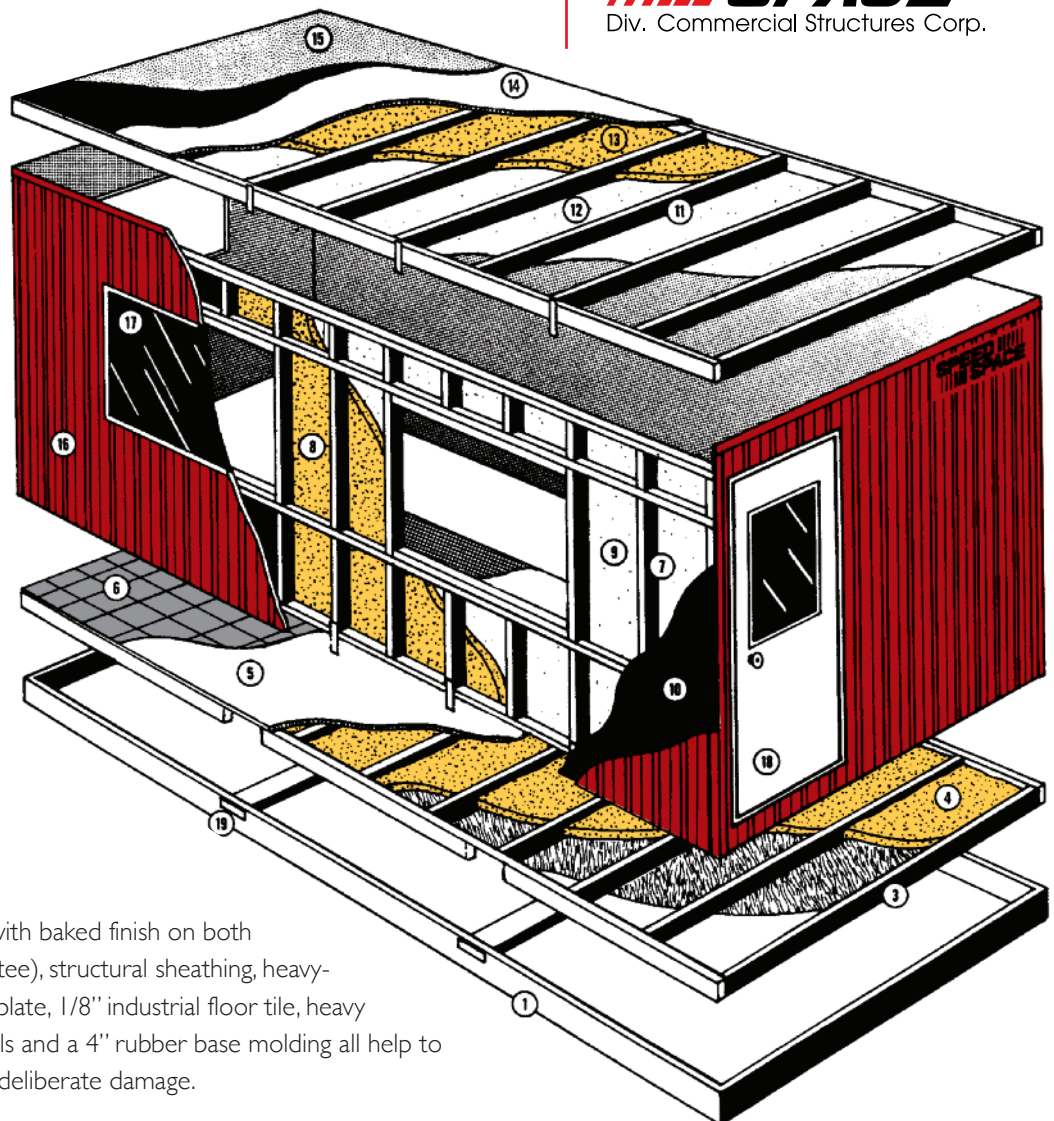
Exterior steel siding with baked finish on both sides (40-year guarantee), structural sheathing, heavy-duty doors with kick plate, 1/8" industrial floor tile, heavy duty vinyl interior walls and a 4" rubber base molding all help to control accidental or deliberate damage.

GUARANTEE

IF YOU ARE NOT COMPLETELY SATISFIED WITH *SPEED SPACE* ON DELIVERY AND AFTER INSPECTION, WE WILL TAKE THE BUILDINGS BACK AT ABSOLUTELY NO COST OR OBLIGATION TO YOU.

Buildings and Offices are backed by our unconditional return guarantee, which demonstrates uncompromised quality in our products. *SPEED SPACE* is the only company in our industry with this guarantee.

SPEED*  *SPACE
Div. Commercial Structures Corp.



Standard Specifications

1. PERIMETER FRAME: Perimeter tubular 2" x 6" frame members (13 ga.) with structural steel "C" channel 2" x 8" set perpendicular to and inletted into side tubular members. Channel utilized as forklift slots for handling. All frame parts coated with black corrosive resistant paint.

2. METAL WEATHER SHIELD: Galvanized steel construction. Shield covers entire floor assembly and is located between frame and underside of floor joist.

3. FLOOR JOISTS: Joists nominal 2x4 (1 1/2" x 3 1/2") spaced in a lateral configuration, 12" O.C. Lumber #2 SPF or better.*

4. FLOOR INSULATION: R-11 Fiberglass batt-type insulation between floor joists entirely fills any and all voids.

5. FLOOR DECKING: 3/4" thick A.P.A. rated plywood fastened securely to floor joists with glue and ring shank nails (spaced approximately 4" O.C.) All seams sanded smooth and filled as necessary.

6. FLOOR COVERING: Vinyl composition floor tile 1/8" thick 12" x 12" squares laid on the floor utilizing waterproof tile adhesive. Pattern is full depth of tile.

7. WALL STUDS: Studs nominal 2x4 (1 1/2" x 3 1/2") space 16" O.C. Lumber SPF stud grade or better. Top plate nominal 2x4 (1 1/2" x 3 1/2") fastened securely to studs. Bottom plate nominal 2x4 (1 1/2" x 3 1/2") fastened securely to studs.

8. WALL INSULATION: R-11 Fiberglass batt-type insulation between studs entirely fills any and all voids. Total R-value is R-14 with sheathing.

9. INTERIOR WALL COVERING: 1/2" thick gypsum board with laminated vinyl covering fastened to the inside of the studs with wide crown staples and gypsum adhesive: Class "A" flame spread rating. 4" vinyl base cover.

10. EXTERIOR WALL SHEATHING: Under steel siding structural sheathing secured to entire exterior, per manufacturer's recommendations - 1/8" Structural Thermo-Ply sheathing.

11. ROOF FRAMING: Rafters nominal 2x4 (1 1/2" x 3 1/2") spaced in lateral configuration 16" O.C. Lumber is #2 SPF or better.*

12. INTERIOR CEILING: Ceiling material 1/2" gypsum with white stucco pre-finish fastened securely to roof rafters with wide crown staples and screws: class "A" flame spread rating.

13. ROOF INSULATION: R-11 Fiberglass batt-type insulation between roof rafters entirely fills any and all voids.

14. EXTERIOR ROOF SHEATHING: The top side of the rafters has 7/16" sheathing fastened securely to roof rafters, covered completely with a minimum 4 mil. polyvinyl vapor barrier.

15. ROOF COVERING: 30 ga. galvanized steel construction. Roof metal covers entire roof assembly.

16. EXTERIOR SIDING: 29 ga. pre-finished (on both sides) commercial type galvanized steel siding with appropriate top and bottom trim fastened securely to studs. Seven standard colors available. 40-year guarantee.

17. WINDOWS: Fixed glass (picture) window type, double insulated glazing with vinyl extrusion around the perimeter. Windows secured in place and sealed with silicone-based sealant. Double-glazing 1/8" sliding windows optional.

18. EXTERIOR DOORS: Sandwich type construction doors with .019 aluminum on both faces and interior core of foam and wood perimeters. Welded aluminum extrusion surrounds the assembly. The assembly is in turn pre-hung in an aluminum frame equipped with heavy duty metal hinges. Door light is fixed tempered glass single pane. Heavy duty door closure included.

19. FULL DEPTH FORK POCKETS: All sizes 2 1/2" x 8" structural "c" channel (3 1/2" x 7" opening).

20. INTERIOR LIGHT FIXTURES: All light fixtures and 4'-0" (four foot) T8 twin tube with an acrylic wrap-around type diffuser cover.

21. INTERIOR CEILING HEIGHT: The dimension from the finished floor surface to the finished ceiling surface is 8'-0" (eight foot) with 2x4 wall studs and R-11 insulation. Total R-value is R-14 with sheathing.

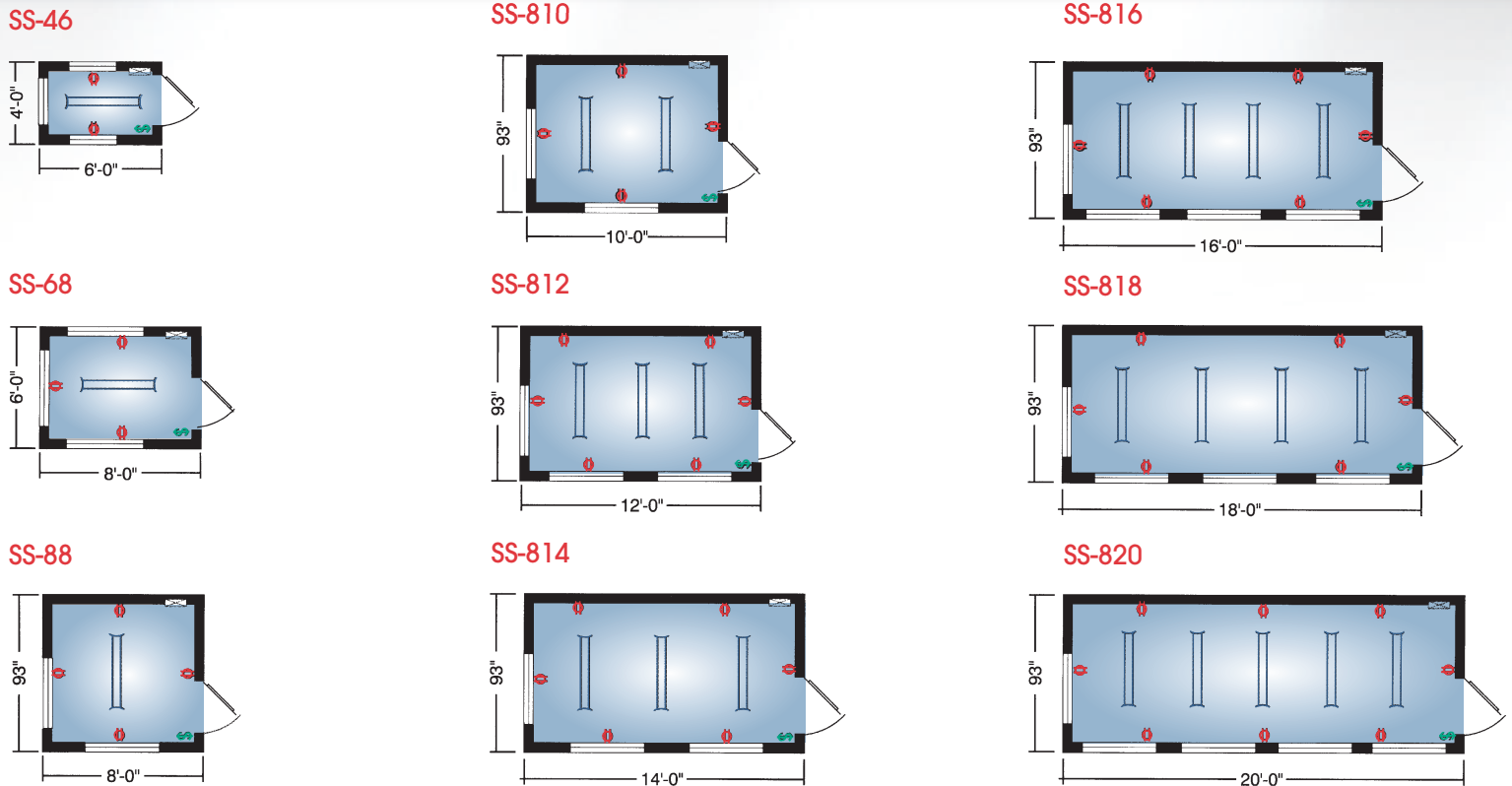
22. ELECTRIC SERVICE PANEL: Prewired service entrance panel equipped with 60-amp main breaker, 15-amp breaker (for lights), 20-amp breaker (for receptacles), and any additional breakers necessary. Entrance conduit through the exterior wall for ease of hook-up. All electric components U.L. listed and wired to National Electrical Code. Standard service 240/120V, single phase, 60 cycle.

* SS-10 Series utilizes nominal 2" x 6" floor and roof joists.
SS-12 Series utilizes 2" x 8" floor and roof joists.

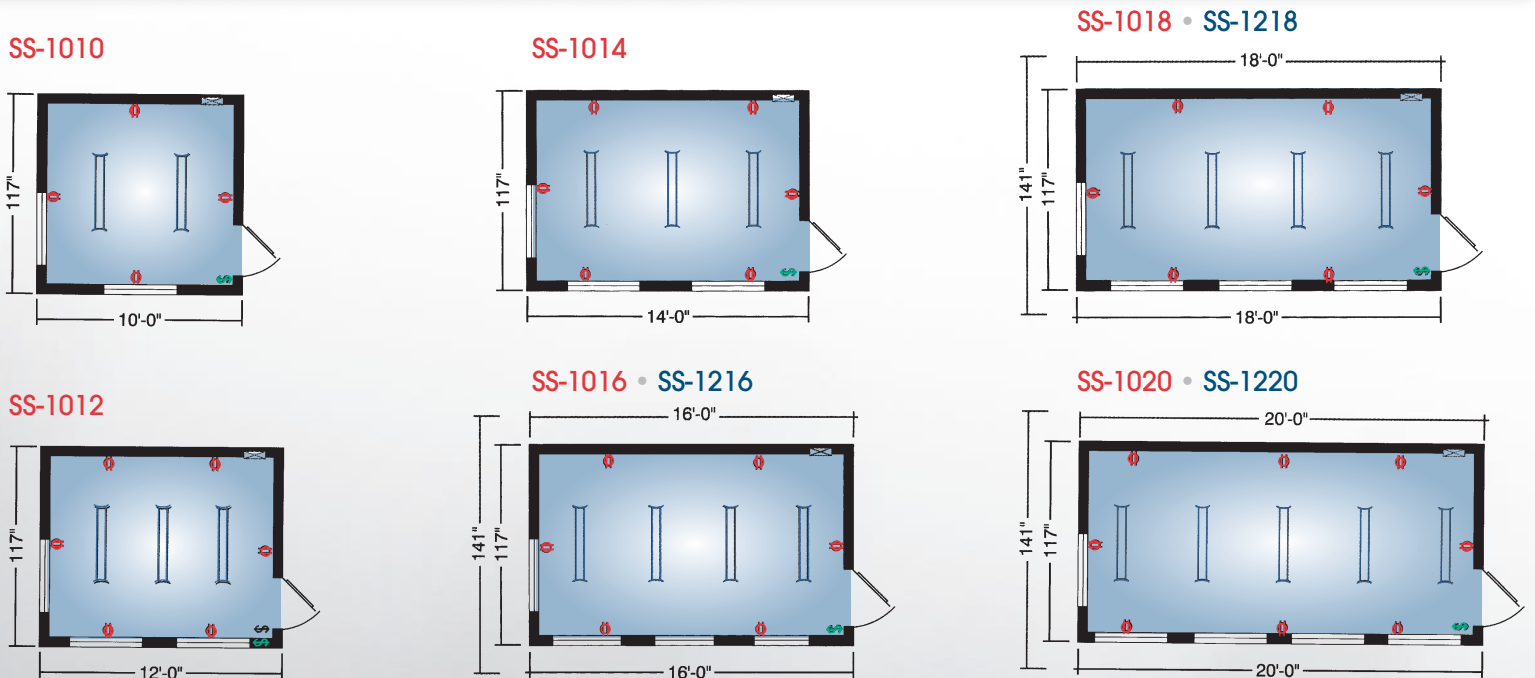


Standard Floor Plans

Overall width is 96 1/4" on SS-8 wide models



Overall width is 120 1/4" on SS-10 wide models and 144 1/2" on SS-12 wide models



Legend

- 4' double tube fluorescent with acrylic diffuser
- Switch
- Duplex receptacle
- Electrical panel 60 amp 220 volt

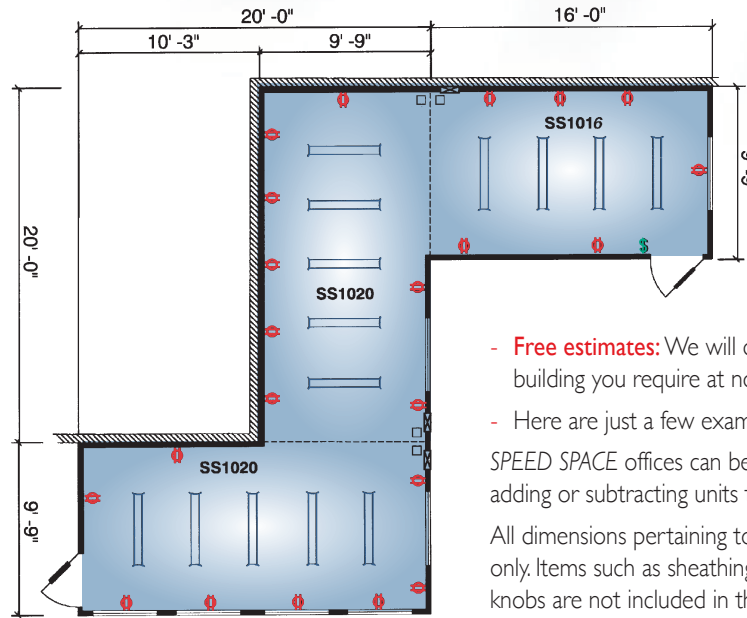
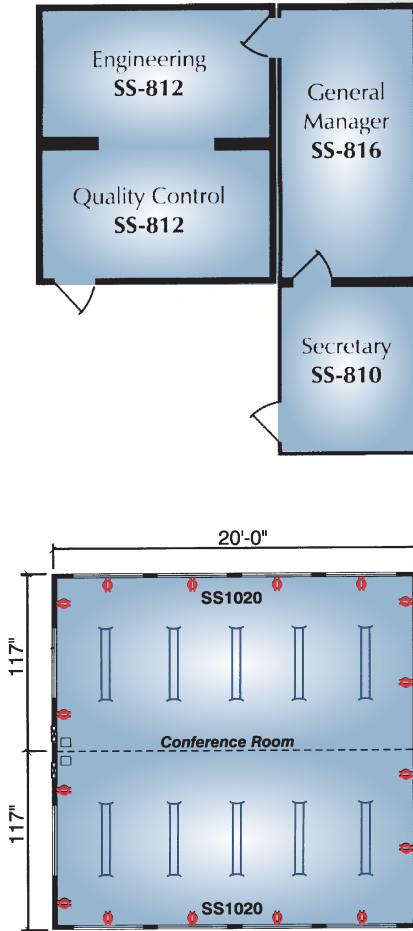
Weights (approx.)

SS-88	1649 lbs.	SS-1010	2260 lbs.
SS-810	1890 lbs.	SS-1012	2420 lbs.
SS-812	2120 lbs.	SS-1014	2620 lbs.
SS-814	2390 lbs.	SS-1016	2860 lbs.
SS-816	2570 lbs.	SS-1018	3140 lbs.
SS-818	2800 lbs.	SS-1020	3460 lbs.
SS-820	3070 lbs.		

Notes

- Windows and doors can be arranged to suit your needs
- Windows can be added or deleted
- Service entrance can be relocated
- Windows 46" x 27"
- Doors 36" x 80"

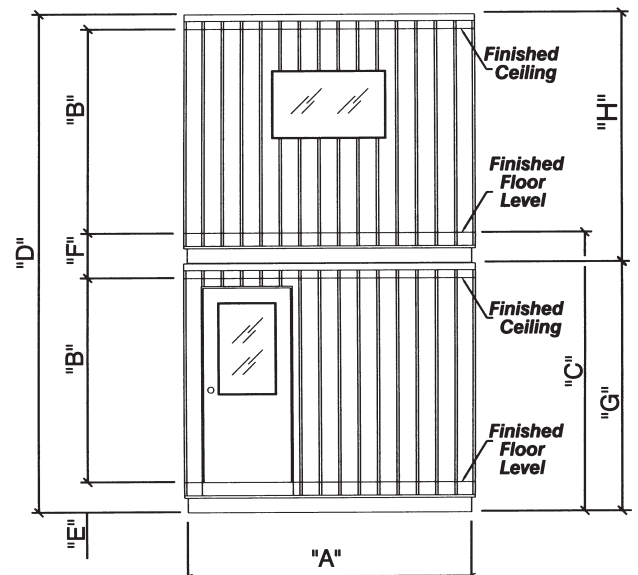
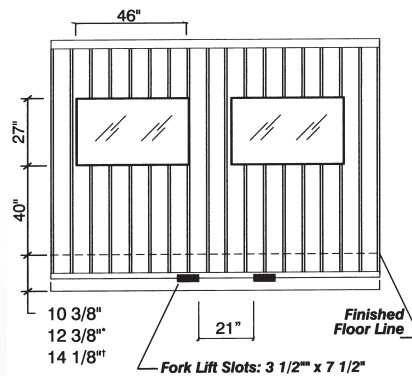
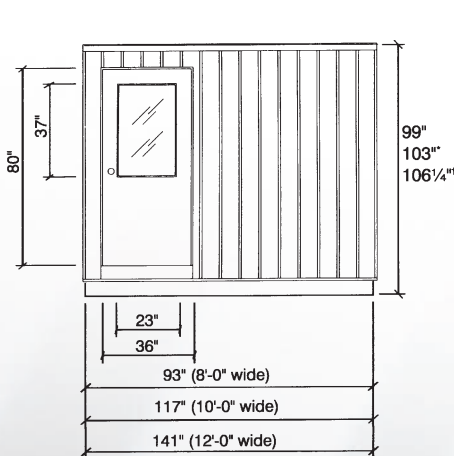
Modular Floor Plan Examples



- **Free estimates:** We will design, engineer and price any building you require at no cost to you.
- Here are just a few examples; the possibilities are endless! SPEED SPACE offices can be designed into larger facilities by adding or subtracting units to your specifications.

All dimensions pertaining to unit width are reflecting frame size only. Items such as sheathing, siding, air conditioners or door knobs are not included in these dimensions.

Custom Floor Plans Available Designed to your needs



* DENOTES DIMENSIONS FOR 10' WIDE MODULE
† DENOTES DIMENSIONS FOR 12' WIDE MODULE

Feature Legend

"B" IS SET AT A STANDARD 7' CEILING HEIGHT

	"C"	"D"	"E"	"F"	"G"	"H"
"A" SS-8 Wide (93")	109 1/4"	197 3/8"	10 3/8"	14 7/8"	98 7/8"	98 5/8"
"A" SS-10 Wide (117")	115 1/4"	205 3/8"	12 3/8"	18 7/8"	102 7/8"	102 5/8"
"A" SS-12 Wide (141")	120 1/2"	212 3/8"	14 1/8"	22 3/8"	106 3/8"	106 1/8"